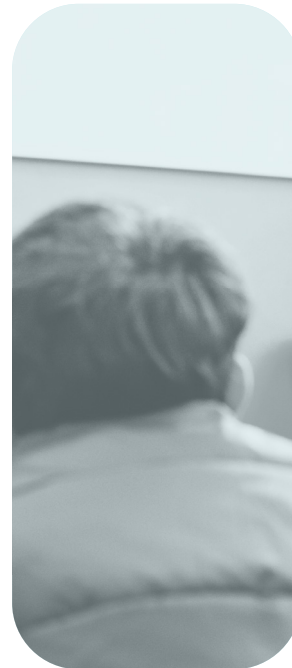
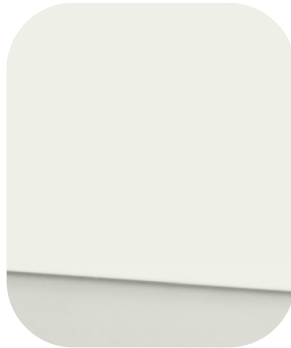
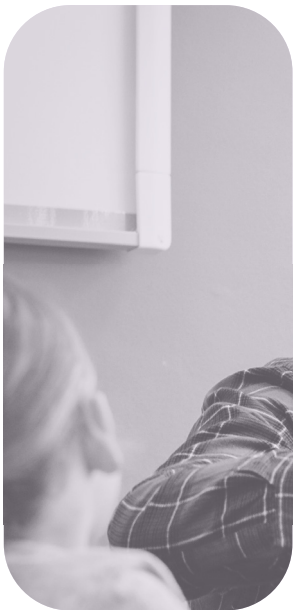




2024-2025

Catalog of Services



A Letter from the Agency Administrator

Over the past few years, our area educators have needed to adapt to changing budgets, classroom requirements, and more to continue offering high-quality education. To meet the needs of over 170,000 students and their educators is no small or easy feat. The reason why CESA 2 exists is to be responsive to the ever-changing needs of our 74 school districts. That's why, as an agency, CESA 2 has carefully considered what services and opportunities are important to you.



As part of our strategic visioning process, our staff worked to develop design principles and bold steps late last year. We worked towards what would be our primary objective for the school year. From our discussions, we decided on the idea “to create and understand raving fans.” To summarize, we want to grow and evolve our services, workshops, and more to make enthusiastic educators who find their needs fulfilled through every interaction with CESA 2. By knowing what is important to you, we can give you every tool you need to succeed.

To do that, we continue to update and maintain our services in response to a changing educational landscape. We've updated our Centers of Excellence, including adding a new one centered around services for inclusive learning, helping every student to thrive and succeed. We are listening to changes in community interactions and legislation, such as with Act 20 regarding literacy, to provide what you need to stay current with educational practices. We are also looking into the future for opportunities to strengthen our diverse school districts, such as an international learning initiative to connect schools and students from other countries with our member schools. This initiative includes classroom-to-classroom connections and accepting international students in their senior year. This initiative begins with a partnership we developed in China, expanding into India, with continued expansion with future countries down the road.

As we work to create raving fans this school year and beyond, please let us know of any way we can assist you and your schools in achieving your goals. Our duty is to serve you and maintain educational excellence, so never hesitate to contact us at CESA 2 with your unique needs.

A handwritten signature in black ink that reads "Daniel J. Hanrahan". The signature is written in a cursive, flowing style.

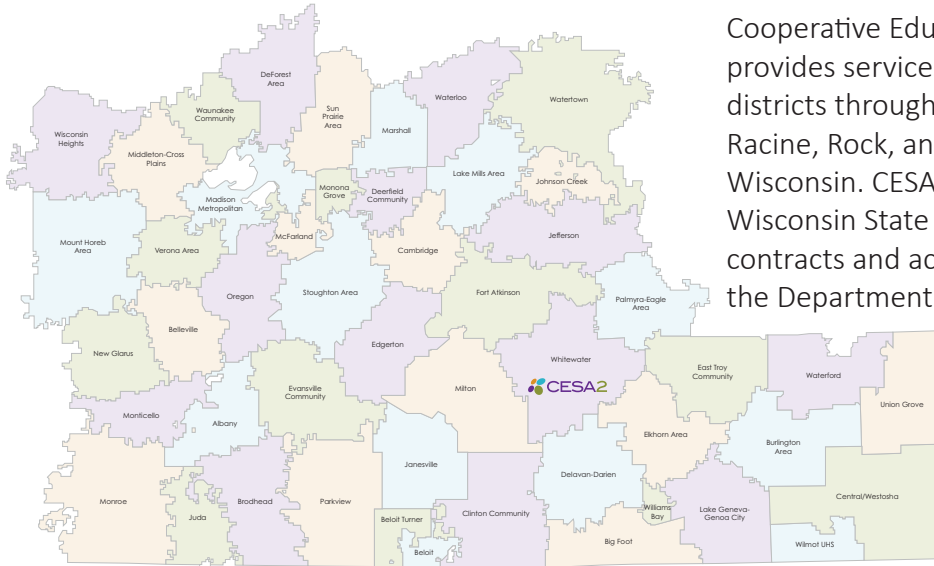
Dan Hanrahan
Agency Administrator
dan.hanrahan@cesa2.org

Equity Statement

At CESA 2, we advocate for equity and work as allies in partnering with our districts and their stakeholders to improve student outcomes through collaboratively changing the educational system. We persist in the challenge of continually pushing ourselves, district leaders, school leaders, educators, and peers into conversations, reflections, learning, change, and actions that will make real the vision of all students succeeding.

We center student outcomes by holding firm to the goal of accelerating learning through culturally responsive education so that students engage deeply with our state's academic standards, while simultaneously experiencing learning for justice, and learning for joy.

CESA 2



Cooperative Educational Service Agency 2 (CESA) provides services and support to its 74 member school districts throughout Dane, Green, Jefferson, Kenosha, Racine, Rock, and Walworth counties in southern Wisconsin. CESA 2 is governed by section 116.01 of Wisconsin State Statutes, which allows it to enter into contracts and act as a liaison between school districts, the Department of Public Instruction and the U.S.

Department of Education. Funding for CESA 2 programs and services comes from state and federal grants, professional development workshop fees, and fees paid for specific services.

CESA 2's Mission

Improve student learning by expanding the capacity of our diverse school districts

Our Values

- Collaborative Relationships
- Effective Practice
- Family Engagement
- Tailored Services
- Shared Leadership
- Results Focus
- Innovative Thinking

CESA 2's Goal for 2024-2025

Every year, CESA 2 develops Objectives and Key Results (OKRs) to determine how to achieve CESA 2's mission in our area schools. OKRs are designed to cascade through programs and individuals, starting from the executive level, ensuring proper integration and teamwork. This year, our goal is this:

To Create and Understand Raving Fans

Educators are doing tremendous work in classrooms. Principals and other leaders are implementing guidance and policies to make their schools the best places for learning and well-being. As districts' partner in education, CESA 2 strives not only to support but also to amaze.

Our services aim to create such an impact through our quality content that you'll love to consult with us repeatedly and recommend us to fellow educators. To ensure we provide worthwhile services and consultation, we strive to be highly responsive and meet your needs promptly, even before unforeseen circumstances arise. From effective services to supplemental resources, our work focuses on creating and maintaining **raving fans**.

Professional Advisory Committee (PAC)

CESA 2's Agency Administrator and its Board of Control are advised by the administrators of the 74 member school districts. The Professional Advisory Committee (PAC) meets monthly. All CESA 2 school district administrators are invited to attend the PAC meetings.

Education Foundation

The CESA 2 Education Foundation, Inc. is a nonprofit corporation formed to supply schools throughout the CESA 2 region with the services and support that they may not be able to individually afford, but their educators and students deserve.

The Foundation allows for private and corporate donations to assist in these program-worthy causes.

The Board of Control

The Board of Control is an 11-member board representing geographical clusters in CESA 2. Each member of the Board of Control is a member of his or her school board.

The Board of Control:

- Sets policies
- Authorizes expenditures of all funds
- Appoints an Agency Administrator
- Receives funding from districts paying for services, state categorical aid, and state and federal grants

Board Members (2023-2024)

Marian Viney, *Chairperson* - Belleville
Steve Brown, *Vice Chairperson* - Salem
Karl Dommershausen, *Treasurer* - Janesville
Eric Armstrong - Marshall
Lisa Huempfer - Whitewater
Kathy Klein - Edgerton
Tom Mooney - McFarland
John Porco - Verona
Dennis Purtell - Waterford UHS
David Schroeder - Watertown

Services

The world of education is ever-changing. Our new and returning Centers of Excellence and our general and statewide services adapt every year to meet your needs. Our services work to help you and all the staff in your school and district utilize best practices, enhance your leadership and educational skills, and create raving fans in your district and beyond.

For almost all services, districts can contract for multiday packages of professional development and coaching through a service agreement. Packages may focus on one or a combination of improvement goals.

Need a service not listed in this catalog? Reach out to us at cesa2.org and let us know what you're looking for! We'll connect you with the appropriate CESA 2 contact, or look for a way to best provide the service you need.



Capacity Building Framework



AWARE

Introduction to a topic, new approach to current work, exploration of ideas for improving current practices or outcomes.



COMPREHEND

Recognize the importance and relevance of the practice, explain routines for initial application, and describe necessary infrastructure to get started.



PRACTICE

Try with support and “work to do it right”, initially cumbersome shift in practice, practice with reflection and feedback to build skill.



REFINE

Work to do it better. Apply appropriate strategy independently, adapt practice for unique circumstances, and develop expertise with coaching and feedback.



TEACH

Develop deep expertise and acquire sufficient knowledge, skill, and experience to support others' learning. Gain instructional leadership with support.

CESA 2's Capacity Building Framework is designed to ensure a well-matched, targeted, and efficient learning and implementation experience.

This framework can be applied to both individuals and systems. It is a part of all our professional development opportunities to guide you across all aspects of a particular topic.

CESA 2 is available to help you along each step of the way! Our services are designed to address capacity-building efforts at each level represented in this Capacity Building Framework. When you work with our consultants, we will lead you through one or more of these frameworks to get to the point where you can lead and instruct others at your school or district on what you have learned.

Accomplishments

Behavior & Mental Health

971

participants trained in Nonviolent Crisis Intervention or Verbal Intervention this past year

Licensing, Evaluation & Support

CLASS

99%

program completion rate

Substitute Teaching Training

Nearly

4000

Substitute Candidates

New Teacher Center

34 districts served by training over 123 teachers this school year

69 certified mentors this year

FORT Exam

100% pass rate on FORT exam on the first attempt

Continuous Improvement & Data Analysis

2023-2024 first semester

TA Network: Supported 22 districts with a federal identification - serving over 43,000 students

Data Analysis: Providing intensive support for WISEDash and data-driven Career, Community, Life Readiness - serving over 60,000 students

Strategic Innovation for Learning

Presented at

21

international, national, and state conferences

Participating in

11

professional organizations

Increased network participation by

46%

Specialized Services & Staffing

86%

of CESA 2 districts use itinerant services

PRC Library

3811 items lent across
27 districts

In-District Contracts

180+
contracts across districts
and organizations

Head Start Program

Family Services

29
parents received Mental Health
Services from consultants

Driver Education

Providing Driver Education in

34
School Districts to
3,239
learners through face-to-face,
Zoom, and online with

8,900

Behind the Wheel Hours

Child Development Services

195 three and four-year-old
children received
comprehensive preschool
services

27% were Dual Language
Learners

21% of children had an IEP

87 four-year-olds received
full-day services in
collaborative 4K/Head Start
classrooms.

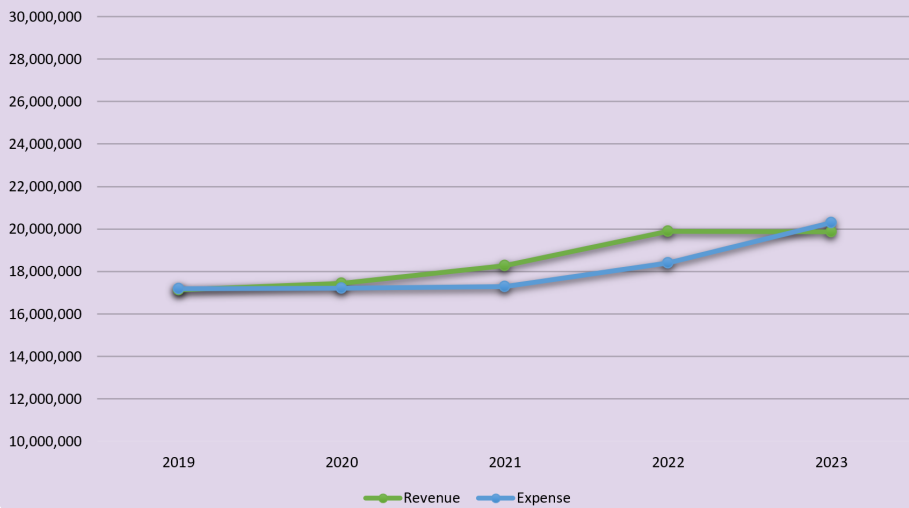
Partners include:

- Watertown Unified School District
- Fort Atkinson School District
- School District of Jefferson

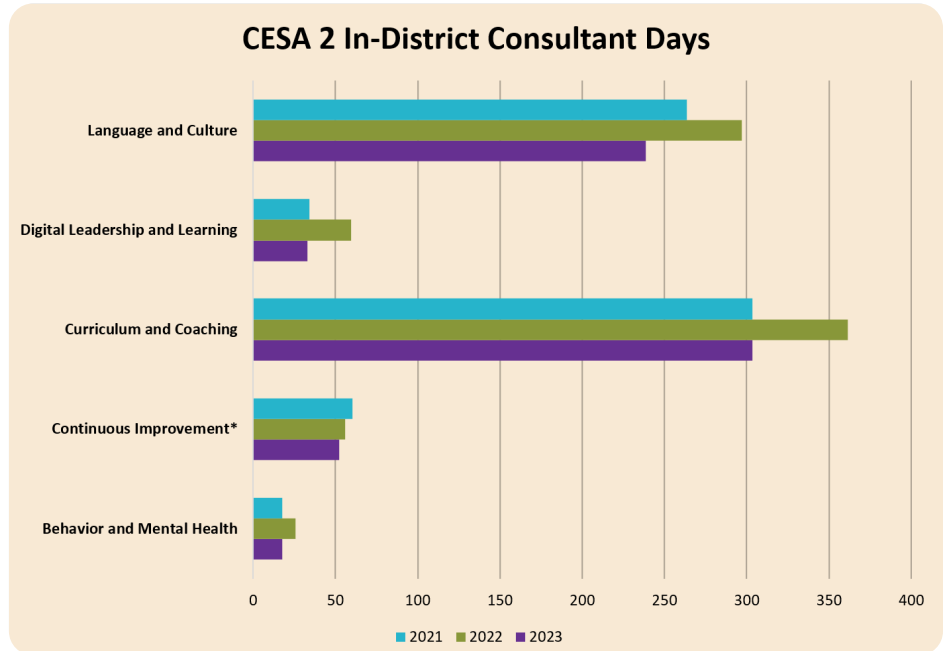
CESA Purchasing

100+
Vendor Partners

CESA 2 Revenues & Expenses



CESA 2 In-District Consultant Days



*Numbers combined from the Continuous Improvement & Implementation and Data & Strategic Planning Centers of Excellence due to their merger this upcoming school year

CESA 2’s revenue goal is to sustain a slightly positive margin that allows us to continuously reinvest and expand our areas of expertise, all in an effort to support our member districts best. With the rapidly growing needs of our area schools, CESA 2 expanded to meet these necessities with additional consultants, itinerants, staff, and services. As new challenges and legislative changes arise, CESA 2 continues to be responsive to feedback and unique requests to meet the needs of all students and educational staff.

Centers of Excellence



Behavior & Mental Health
(p.10-11)



Continuous Improvement & Data Analysis
(p.12-13)



Curriculum & Coaching
(p.14-15)



Language & Culture
(p.16-17)



Licensing, Evaluation & Support
(p.18-20)



Specialized Services & Staffing
(p.21-23)



Strategic Innovation for Learning
(p.24-25)



Systems for Inclusive Learning
(p.26-27)



General & Statewide Services
(p.28-34)

To help in our efforts to create raving fans, here are just some of the new services we're offering:

- **NEW Center of Excellence: Systems for Inclusive Learning**
To help you ensure a quality education for every student, we're offering a variety of services to help you analyze your situation, generating practical strategies tailored to your district
- **Updated Centers of Excellence**
Some of our Centers of Excellence have transformed or combined, such as our Strategic Innovation for Learning Center. They still provide the in-depth services they did before, in addition to new services to meet everchanging needs
- **New Administrative and Communications Services**
We're looking forward to what we can provide on the business and creative side of your school! Check out our General & Statewide Services for business services, videography, quote purchasing services, and more



Behavior & Mental Health

Caring for Student and Staff Well-Beings

Through the Behavior & Mental Health Center of Excellence, schools receive the resources, tools, training, and coaching needed to support healthy behaviors for both students and staff and encourage positive social-emotional learning (SEL).

Functional Behavioral Assessment (FBA) and Behavior Intervention Plans (BIPs)

Even when implementing a universal behavior support program to a high level of fidelity, some students will need additional support. CESA 2 consultants can train school staff in the use of Functional Behavioral Assessments (FBA) and design of Behavior Intervention Plans (BIPs). Ongoing coaching or review of FBA and/or BIPs is also available.

CPI Nonviolent Crisis Intervention (NVCI) Training

At this training, participants will receive certification in the Crisis Prevention Institute's (CPI) Nonviolent Crisis Intervention (NVCI) Training. This training focuses on the recognition that all behavior is a form of communication and provides participants with the tools to recognize/respond appropriately to support the student and deescalate the situation. Participants will be able to identify student's behavioral levels and will learn valuable approaches/strategies to respond appropriately for each of those levels. This training includes the teaching of holding and disengagement skills as part of the safety interventions. At the conclusion of the training, participants will earn their NVCI Blue Card Certification. Both the initial NVCI and the refresher trainings are available in-district and at CESA 2.

CPI Verbal Intervention Training

The Crisis Prevention Institute's Verbal Intervention Training provides staff with an effective framework for preventing, de-escalating, and safely responding to crisis behavior. The program centers on the recognition that all behavior is a form of communication. Participants will gain a broad range of tools to help them manage their own emotional responses and identify escalating behaviors in others. This training does not include any holding and disengagement skills. At the conclusion of the training, participants will earn their CPI Verbal Intervention Blue Card. This training is available in-district and at CESA 2.

Pyramid Model

The Pyramid Model was created by the Center for the Social and Emotional Foundations for Early Learning (CSEFEL) and the Technical Assistance Center on Social Emotional Intervention for Youth Children (TACSEI). Based on the public health model, the Pyramid Model looks to guide educators, families, and other early childhood professionals, specifically for those involved with children up to five years old. The model promotes positive social, emotional, and behavioral outcomes for ALL students in the education system and gives plans to help children with or at risk for delays and disabilities in their early development. Through workshops and consulting, CESA 2 professionals will help implement the Pyramid Model in your school system.

Professional Self-Care

Through building awareness of Secondary Trauma, Compassion Fatigue, and understanding how to boost Compassion Resilience and Professional Self-care, CESA 2 can help school district staff increase their professional stamina to best serve their students. CESA 2 consultants are able to offer professional development to both individual staff and specific staff groups seeking to boost their own resilience and to school systems desiring to support their staff's wellness.

Social Emotional Learning (SEL)

In order to help students become College and Career Ready, it is essential that they develop social and emotional skills. In addition to this being a worthy aspect of education on its own, research has shown students with strong social and emotional skills are able to perform better academically and better engage in instruction. CESA 2 staff are able to support schools in their journey toward ensuring staff and students develop strong social and emotional skills.

Trauma Sensitive Schools (TSS)

Given the high incidents of Adverse Childhood Experiences (ACEs), Toxic Stress, and resulting Trauma, CESA 2 staff are trained to support our schools and school district staff in adopting philosophies and practices to become more Trauma Sensitive. By partnering with DPI and utilizing online learning modules, CESA 2 professionals are able to develop educators through knowledge building and coaching to individuals, leadership teams, and school systems. When adopting a Trauma Sensitive School approach, schools are acting to enhance students' educational outcomes by reducing barriers related to trauma. CESA 2 consultants also assist schools to ensure this lens is applied through the existing school framework (i.e., Equitable MLSS) and is additive to other school efforts, such as SEL, behavior programs, etc.





Continuous Improvement & Data Analysis

Integrating Systems for Maximum Effectiveness

The Continuous Improvement & Data Analysis Center of Excellence provides a variety of DPI-approved grant-funded and district contracted services to benefit the experiences of learners. All these services come together to transform your schools on all levels and aspects of education.

Academic and Career Planning

Academic and Career Planning (ACP) is intended to equip our students and families with the tools necessary to make informed choices about postsecondary education and training as it leads to careers. CESA 2 provides ACP services to districts that are interested in building robust, integrated ACP programming. Services include networking meetings, ACP alignment, ACP planning support, ACP integration into content areas, XELLO Training and Support, and networking with area technical and 4-year colleges.

Career, Community & Life Readiness (CCL Readiness)

CESA 2 offers an extensive and comprehensive process to assist districts with developing a career, community, and life readiness educational system. Districts are supported through a systematic approach that includes an introduction, evaluation and assessment of current state, training, and

developing their readiness structure. The CCL Readiness process includes the five key focus areas of: Academic and Career Planning, Portrait of a Graduate, Equity and Access with CCL Readiness, Redefining Ready Metrics, and the Portrait of a System.

District Assessment Coordinator (DAC) Network

District Assessment Coordinators (DACs) have a myriad of responsibilities to ensure that their district assessments run smoothly. The DAC Network provides an opportunity for DACs to share best practices, tools and insights. The DAC Network meets throughout the year and is a free network for CESA 2 member districts.

Implementation Science

At its core, Implementation Science builds the capacity of school and district teams to strengthen systems that support all students and their teachers. Through purposeful action and attention to Active Implementation Frameworks, CESA 2 is available to assist districts and schools to build a system that incorporates Equitable Multi-Level Systems of Supports (E-MLSS) with the use of effective implementation and research-based, evidence-informed practices.

Site-Specific Technical Assistance

District and school staff can contact CESA 2 for consultative support on a variety of issues. CESA 2 staff collaborate with external experts to meet your needs or make a



referral to other individuals or agencies that will better support your particular need.

Systems Review Process

The conceptual framework of the systems assessment includes consensus building, infrastructure development, implementation routines, and sustainability actions. The procedures for the systems assessment include focus group interviews, surveys around practices and beliefs, site visits and walkthroughs, policy and procedure review, and data review. Districts will receive a comprehensive report with recommendations and a report back to leadership teams.

Systems support activities may be targeted to broadly improve district or building-level system structures and routines that support high-quality continuous improvement practices.

More focused program-specific review activities are also offered. Examples of program focus include Language Arts, Mathematics, Science, Social Studies, early childhood/preschool programs, and Special Education.

Systems Support and Data Analysis

This analysis works to provide quality support services to school districts for building strong organizational system structures and routines that are consistent with “Best-Practices” research. CESA 2 will provide professional development and coaching support to school districts for learning and deploying continuous system improvement routines that guide decision-making.

Technical Assistance Network

The Technical Assistance (TA) Network provides continuous improvement assistance to advance educational equity. Our network meetings include extensive individualized presentations and conversations by experts

to implement evidence-based improvement strategies in your school and district. The network covers a variety of topics such as equitable multi-level systems of supports, special education, Title I, Educator Effectiveness, data, and coaching.

Wisconsin School Report Card Interpretation

The Wisconsin School Report Cards represent a public-facing accountability report that communicates information about district and school performance as compared to benchmarks established by the WI Department of Public Instruction. The Wisconsin School Report Card was revised substantially in 2021. CESA 2 offers workshops and customized technical assistance for district and school staff interested in understanding the data on the School Report Cards. Most importantly, these supports build capacity for how to use this data to evaluate system impacts and for developing system improvement strategies that lead to equitable outcomes across all student achievement domains, and social-emotional development levels.

WISEdash/WISExplore

CESA 2 staff provide districts with support around understanding and using WISEdash and WISExplore. The support focuses on helping educators to perform comprehensive data inquiry to assist with school improvement planning and implementation.

Educators are supported in the use of state and local data systems and tools, as well as how to research and implement data-informed practices. Trainings focus on helping participants understand Report Card scores and their interpretation, navigation of WISEdash features, the key data types available in WISEdash, investigation of basic data questions using WISEdash, and documenting data inquiry.



Curriculum & Coaching

Building Up Both Students and Staff

Ongoing, job embedded professional learning has been shown to be the most effective way to increase the impact of instruction. Inspire your educators to consider curriculum from new lenses, encourage reflective practice, and implement shifts in practice with coaching and support.

CESA 2 consultants support the implementation of the newly updated Wisconsin State Standards and Key Shifts, conduct curriculum review process, and support implementation of high-quality standards-aligned instructional materials in all content areas. Set goals that benefit all of your students' learning and future. The Curriculum & Coaching Center of Excellence team is ready to guide your journey.

Early Learning Services, Standards, and Implementation

CESA 2 believes that education begins well before Kindergarten. Our Early Childhood Consultants are child development leaders. They can provide tailored services to meet the needs of your district, including:

- Instructional coaching in early literacy, math and social emotional competencies
- 4K-5K curriculum alignment
- Support for High Quality Inclusionary Practices
- Pyramid Model training, coaching and support

All services place an emphasis on the whole child, developmentally appropriate practices and evidence-based strategies.

English Language Arts/Literacy Services, Standards, and Implementation

CESA 2 offers 317-licensed PK-12 literacy consultants with extensive knowledge of culturally responsive practices who utilize implementation science. Our consultants can support the review, development, or selection of instructional materials, as well as support the implementation of high-quality English Language Arts (ELA) curricula. CESA 2 Reading Specialists also consult and coach district leaders around compliance with state statutes, and development of

equitable multi-level systems of support. They can serve as the district's in-house reading specialist, if needed. We are also available to support initial learning and implementation related to the updated ELA Standards, including shifts around identity, language, foundational skills, and disciplinary literacy. On-site, as well as synchronous and asynchronous options, for standards-aligned curriculum development, facilitation, and coaching for effective system-wide and classroom level implementation are available.

Science-Based Reading Instruction Training and Supports

At CESA 2 we have consultants who are certified trainers in both LETRS® (Language Essentials for Teachers of Reading and Spelling) and Keys to Beginning Reading Success. Contact us today for more information on our flexible offerings both virtual and in person. We can develop a plan that fits your district's professional development needs.

Simply completing a certified science-based reading training may not be enough to ensure that educators are implementing strategies that meet the needs of every student in their classroom. CESA 2 consultants provide coaching to support the implementation of high leverage early literacy instructional practices.

Foundational Reading Skills System Review

CESA 2 offers a district or school-level evidence aligned early literacy review process. Connected to the Wisconsin ELA Standards (2020), the Wisconsin Dyslexia Guide and Wisconsin Act 20, consultants provide a paper review of intended curriculum, gather staff survey data, and collect walk-through data to confirm implementation. These sources of data inform a needs assessment, theory of action, and continuous improvement planning process generating literacy goals moving forward. Lift the level of consistency and equity of instruction! Do a system review today!

Mathematics Services, Standards, and Implementation

CESA 2 consultants support the implementation of the newly updated Wisconsin State Standards (2021) for Mathematics in grades 4K-12 including the new key shifts around agency, identity, and flexibility. We have specialized training in Early Childhood Mathematics around developmentally appropriate and personalized instructional moves connected to how young children think and learn about mathematics. On-site or virtual mathematics workshops are provided for educators across all grade levels. Instructional coaching is available either in conjunction with or separate from other professional learning options.

CESA 2 offers professional learning opportunities and coaching on the implementation of high-quality instructional materials year round that help educators, coaches, and administrators successfully implement mathematics curriculum and create an engaging mathematics classroom. We also provide coaching and consulting services around course sequencing, standards-based grading in mathematics, data collection, and detracking for secondary mathematics.

Science Services, Standards and Implementation

CESA 2 consultants have designed a process for districtwide (K-12) Science curriculum review, gap analysis, vertical alignment, and development or review of published curricular materials aligned to the Wisconsin Science Standards and the Next Generation Science Standards (NGSS) with a focus on embedding phenomena and inquiry. Instructional coaching to support implementation of updated curriculum is also available as part of an effective district roll-out plan. We also offer support for standards-based grading.

Social Studies Services, Standards and Implementation

CESA 2 consultants have designed a process for districtwide (K-12) Social Studies curriculum review, gap analysis, vertical alignment, and development of curricular units aligned to the updated Wisconsin Social Studies Standards. Unit development centers inquiry, and incorporates multiple perspectives, Universal Design for Learning, Backwards Design principles and implementation of ACT 30 and Civics requirements. Instructional coaching to support implementation of updated curriculum is also available as part of an effective district roll-out plan.

Professional Networks

Curriculum & Coaching Consultants offer year-long memberships designed to connect professionals from across districts to network, share resources, and deepen learning around hot topics and new trends in the field. These virtual gatherings last one to two hours and include both information sharing and collegial discourse. Check the CESA 2 professional development website to register for one of the following:

- Literacy & Mathematics Coaching Network
- Disciplinary Literacy Network
- Library Media Specialist Network
- Early Childhood Educators Network



Language & Culture

Enhancing Your Approach to Multilingual Learner Education

The Language and Culture Center (LCC) is dedicated to enriching the educational experience of all students, educators and instructional leaders by supporting the academic, language, literacy, and cultural needs of students from diverse linguistic and cultural backgrounds.

Our experienced team offers a comprehensive range of services tailored to meet your district's present and future goals. Our approach extends from fulfilling legal mandates in ESL and Bilingual education to actively enhancing the overall learning environment, creating inclusive and supportive learning systems for every student. By focusing on multilingual learners, a.k.a. English learners or emergent bilingual students, we not only help districts address students' specific needs but also foster a more diverse, empathetic, and globally aware student body. This holistic support extends to administration, educators, and support staff, equipping all with effective research-based practices and insights.

Professional Learning

Our Language and Culture Center of Excellence is committed to advancing professional growth in multilingual and bilingual education. We offer a diverse range of topics, formats, and levels of engagement, all customized to suit the specific needs of your district, whether it's a small district with few multilingual students or a larger one managing multiple programs and services. Our goal is to help districts create learning environments that help students thrive and support districts' in every stage of professional development within the CESA 2 Capacity Building Framework.

Key Topics: Our services are as varied as the districts we serve. We specialize in areas such as supporting newcomers, translanguaging, co-teaching, culturally inclusive practices, program design, assessment, EL data, and unit and lesson planning for both English and dual language settings. **2024-25 Featured Topics:**

- **WIDA Standards:** We specialize in training both classroom content teachers and EL/Bilingual specialists on integrating WIDA standards for effective instruction.

- **Science of Reading:** Our training focuses on implementing the Science of Reading for English learners and dual language learners equipping educators with practices that support both science of reading and promote multi-language literacy and learning.
- **Coaching for Dual Language:** Since most instruction is in English, educators and their leaders who work within dual language programs can benefit from explicit support centered around the unique needs of students learning within and across languages.

Program Review and Design

Districts have a responsibility to provide effective programs for multilingual learners. We provide specialized support in crafting effective programs for multilingual learners. Start with a detailed needs assessment or comprehensive program review or, consider one of our tailored services to address your district's specific needs. This may include data analysis, English Language Development Plan design, specific lesson and unit planning, on-site consultations, and strategic planning for English learners or bilingual students.

Network Cafeteria Plan

The Language and Culture Center offers robust learning and engagement opportunities through our networks, designed to improve outcomes for multilingual learners by facilitating the exchange of ideas among members on topical research, policies, and practices. Our core network and added virtual networks cover essential topics such as ELD standards, translation services, bilingual education, newcomers, EL programming essentials, and family partnerships. To ensure our services align with district priorities, we conduct an annual needs assessment. Membership in the EL Networks provides access to four yearly core network meetings (available both online and in-person), a choice of virtual networks, consulting services, informative newsletters, supplemental resources, and discounted specific professional learning sessions.

- **Core EL Network:** Our Core EL Network delivers high-quality support and development for districts and teachers with culturally diverse students. In addition to addressing Title III legal requirements, it also promotes resource and expertise sharing. The network features four full-day events, including a book study on effective practices, with both virtual and in-person attendance options.
- **Virtual Add-on Networks:** These are high interest focus area networks. Each meets four times annually for 1 ½ to 2 hours. Network topics include: Multilingual Family and Community Partnership, Dual Language/Bilingual Bicultural, Translator/Interpreter, WIDA Standards, Newcomers, and Recently-Arrived Secondary Students.

EL Coordinator Services

Since school districts are required to have a licensed EL person supporting the EL programming and services, we offer two types of EL coordinator services if your district is not staffed to meet this obligation:

direct delivery of services, e.g., EL testing, tutoring; and one that is more directive or administrative, e.g. data analysis. We can:

- **Assist** your district with meeting legal requirements for educating English Learners including instruction, assessment, bilingual programming, screening, and developing individual learning plans.
- **Support** your staff with effective and ready-to-use teaching strategies and implementation of WIDA English Language Development Standards.
- **Connect** your staff with students & families through culturally responsive education.

Testimonial

“Students were turning and talking-engaging in language. I heard less from the teacher and more from the students. I even sensed a change in tone as the instructor spoke to his students. There was more of a community feel and sense of collaboration, an understanding that taking a chance and using your voice was respected and appreciated in the classroom.”

- Jackie Berndt, Literacy Coach

Interpreting and Translating Services

To assist districts in meeting their responsibility to engage with families in a language they understand, CESA Purchasing has partnered with SWITS for translating and interpreting services. SWITS provides over 40 languages and has certified interpreters and translators. Visit cesapurchasing.org/swits to learn more! Mention CESA Purchasing to receive discounted pricing.



Licensing, Evaluation & Support

Individualizing the Induction and Licensing Experience

The Licensing, Evaluation & Support Center of Excellence offers educator licenses, trainings, mentoring, and supportive opportunities for new and experienced educators. This new center heightens the educational experience and give teachers the formal instruction they need to teach in Wisconsin schools.

CESA 2 Education Career Fair

The CESA 2 Education Career Fair creates a space for CESA 2 districts to relay their open teaching positions with hundreds of graduates or soon-to-be graduates from teacher preparation programs in Wisconsin and out-of-state Universities and Colleges. When your school or district joins us at the career fair, you get to see the most engaged and proactive candidates coming out of our schools of education. Meet the next generation of educators each year in the spring!



CLASS: The Best Way to Earn Your Teaching Licensing!

The CESA 2 Licensure Academy for School Staff (CLASS) program is a Wisconsin DPI-approved pathway to teacher licensure in the state of Wisconsin. CLASS provides formal instruction in the planning and delivery of effective instructional practices, assessment of students' progress, classroom management, and more. This high-quality, affordable program allows you to learn on your schedule with online coursework and individualized coaching sessions. CLASS Candidates can enroll at any time throughout the year.

CLASS currently features the following for initial and add-on teaching licenses:

- 4K-12 ESL
- 3K-12 Special Ed Cross Categorical with FORT Alternative Portfolio Option
- 4K-12 Spanish
- 4K-12 PE with Health Add-On Licensure Support after PE license is earned
- Grades 4-12 Math
- Grades 4-12 Science
- Early Childhood Elementary (Birth to Grade 3) includes FORT exam course and coaching
- Bilingual Supplemental
- Driver Education

Testimonial

"I cannot rave enough about CESA 2 and their CLASS Licensure Program. Their incredible team of compassionate, talented, and dedicated staff have created a program that is robust and applicable to the real classroom. All of the coursework is thoughtfully designed with an intentional purpose and aligned to teaching standards, so that completing each module is meaningful and can be directly linked to your teaching."

- Chelsea Olson, ELL Teacher

More licensure areas coming soon! Watch for our K-9, Deaf & Hearing of Hearing, along with Early Childhood Special Education licenses available upon DPI program approval.

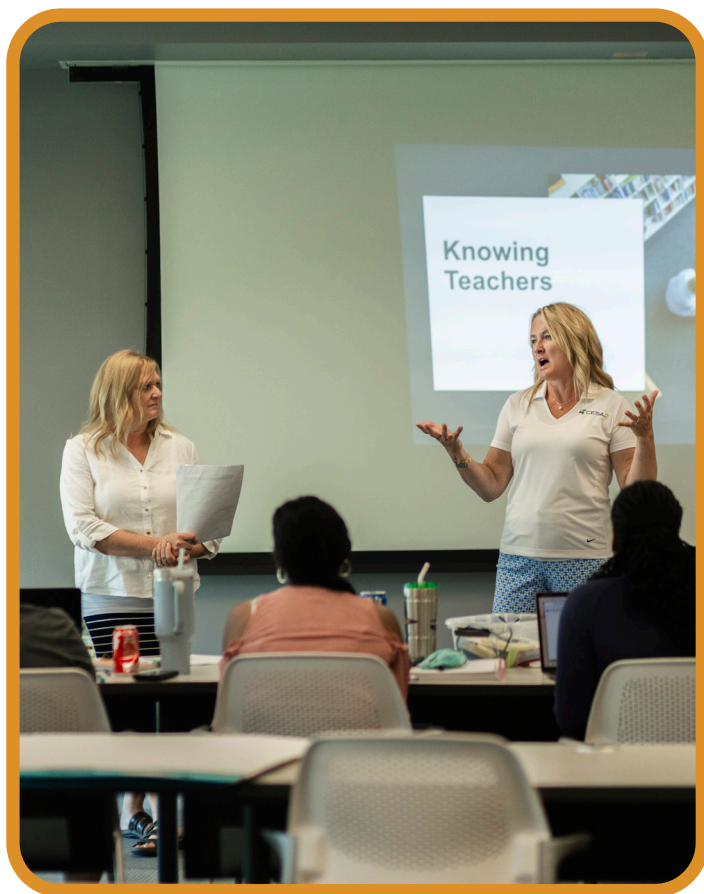
As Fischer, Frey, and Hattie have stated, "Every student deserves a great teacher, not by chance, but by design." With this in mind, CLASS has built an educator licensing program to support you in becoming a great teacher!

Educator Effectiveness/ Effectiveness Project

CESA 2 provides support for both the DPI model (based on the work of Charlotte Danielson) and for the CESA 6 Effectiveness Project (an approved equivalent model based on the work of James Stronge). This service includes professional development, consultation, and customized support for districts as they implement either model. We also offer in-district Educator Effectiveness evaluations with licensed administrators.

New Teacher Center Mentor Training/Teacher Induction

CESA 2 is proud to partner with the New Teacher Center (NTC), a national non-profit organization, dedicated to improving student learning by guiding a new generation of educators.



Our goal is to help CESA 2 districts establish an Induction Program with a cadre of high-quality, well-prepared mentors to work with new teachers through rigorous and engaging training. Based on NTC resources, CESA 2 helps districts create a mentor program that is shown to enhance student learning by as much as 2-5 months in a school year, accelerate teacher practices, and increase teacher recruitment and retention rates.

The state requires mentor training and three years of mentoring for teachers new to the profession. The CESA 2 NTC Mentor program meets the state requirements and offers the high-quality professional development and support your mentors need and your new teachers deserve! The state also offers the Peer Review Mentor Grant that helps support the cost of mentor training. CESA 2 facilitates grant writing support at no additional charge.



Licensing, Evaluation & Support

The CESA 2 New Teacher Center Mentor program is a 2-year certification program delivered in-person and virtually (synchronous/asynchronous) with flexibility for educators during the summer, during the school day or after school sessions.

If a district would prefer its own in-district sessions, we customize training to be flexible to accommodate schedules and virtual/in-person facilitation.

Substitute Teacher Licensure

CESA 2 offers Wisconsin DPI-approved training for those who want to obtain a Three-Year Short-Term Substitute License. A Short-Term Substitute License allows individuals to be substitute teachers in Wisconsin's public schools. With this training, anyone with an Associate's Degree or higher from an US accredited school can be a substitute teacher. Since 2018, over 2000 participants have become certified through our substitute program.

Through this class, participants gain a deeper understanding of the following:

- The culture of schools and the teaching profession
- Health and safety issues, including handling of medical emergencies
- Age-appropriate teaching strategies
- Discipline, conflict resolution, and classroom management techniques
- Techniques for starting a class
- Working with lesson plans
- Working with children with disabilities, including confidentiality issues

Substitute Teacher Licensure

Districts can reach out to CESA 2 at any time for a list of available substitute teachers. With the sub shortage in schools, CESA 2 can

provide contact information for hundreds of potential substitute teachers. Visit our website to access the Substitute Database and reach out to the hundreds who go through our program.

Paraeducator Training

CESA 2's Paraeducator training is an asynchronous 6-8 hour training ideal for the new Paraeducator or those who might appreciate a refresher in terms of roles and responsibilities. There are currently two trainings available:

Option 1: General Paraeducator Training

The training includes:

- **Roles and Responsibilities:** What is the role of the teacher? What is the role of the Paraeducator?
- **Confidentiality:** What are the considerations for confidentiality?
- **Communication:** What are the critical elements of communication?
- **Behavior:** What are the critical elements of behavior management?
- **Students with Special Needs:** What is important to know?
- **English Learners:** Strategies and supports
- **Technology Tools:** Use and purpose

Option 2: EL/Bilingual Paraeducator Training

This new asynchronous course aims to provide EL and bilingual paraeducators with specific tools to support learner agency and advocacy within the schools and communities that they serve. This course is designed specifically for EL and bilingual paraeducators and builds awareness of many factors influencing English Learner education in the United States.



Specialized Services & Staffing

Fulfilling Needs for Each and Every Student

CESA 2 is able to support districts in need of itinerant staff to serve students in the district, or in order to cover for a staff member on leave. Specialized Services & Staffing will provide services written in IEPs or 504 plans to students, attend IEP/504 team meetings, evaluate students to determine needs, and complete all IEP/504 paperwork for the students within the district system. Staff are certified by DPI to provide the services for which they are contracted. Included in the service is the expertise of a licensed Pupil Services Director to work with your Pupil Services Director regarding the services.

Itinerant Services available for contracting:

- Audiology
- Augmentative Alternative Communication (AAC)
- Teachers for the Blind or Visually Impaired
- Teachers for the Deaf or Hard of Hearing
- Physical Therapy
- Occupational Therapy
- Orientation and Mobility Specialist
- Speech/Language Therapy
- School Psychology

Assistive Technology Network

The Assistive Technology (AT) Network provides districts with the opportunity for ongoing collaboration, support, legal updates, tools, and resources in the area of assistive technology for students with IEPs. The quarterly AT Network meetings include presentations from experts in the AT field, best practice learning opportunities, and development of district resources.

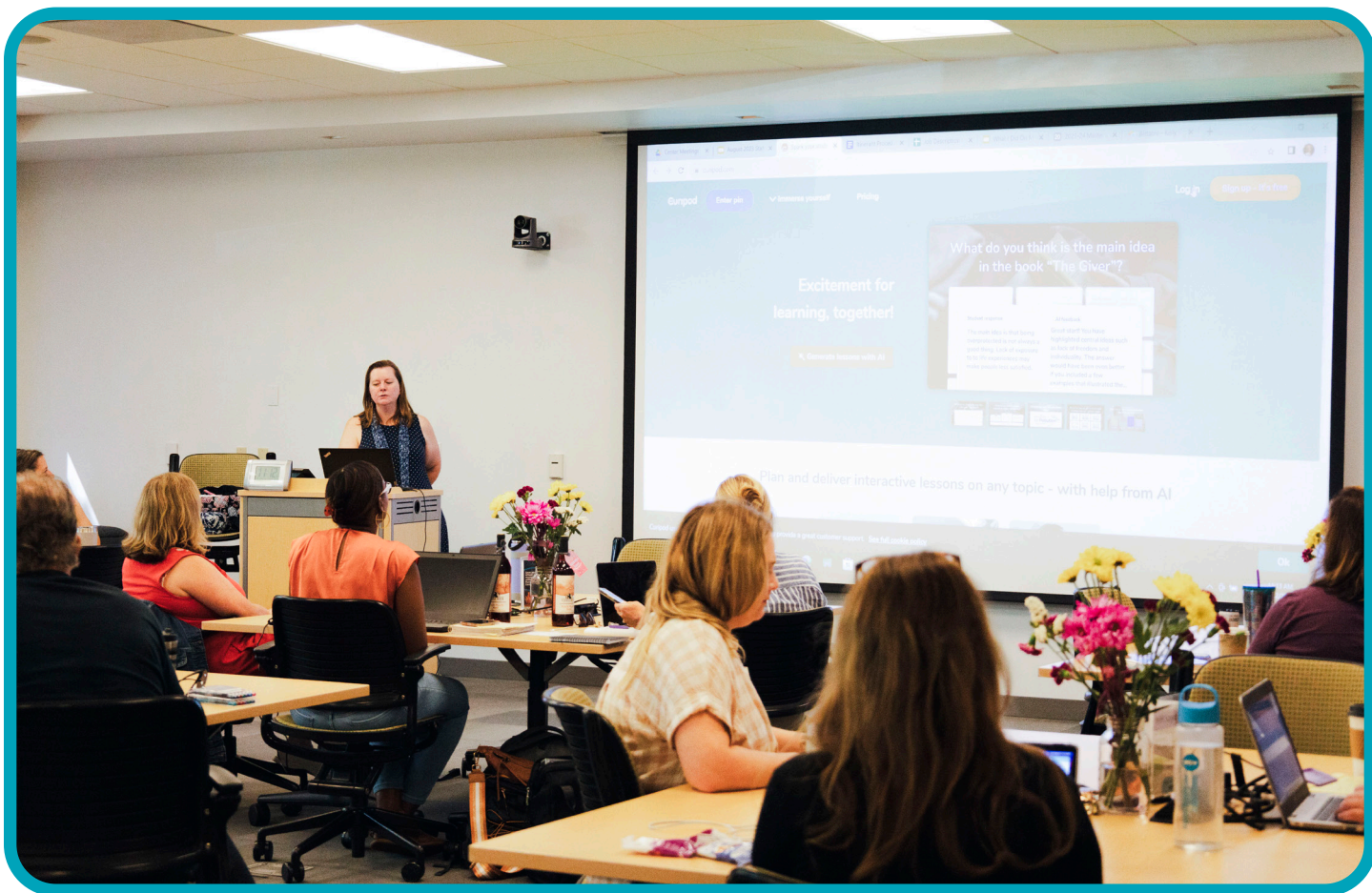
Co-Teaching Services and Implementation

Co-Teaching is generally defined as two licensed educators, often a special education teacher, reading specialist, or EL specialist and a general education teacher, sharing equal responsibility for planning, delivering, and evaluating instruction, and learning to meet the diverse needs

of students in a shared space. One goal of this inclusive instructional model is to increase the likelihood of equitable student outcomes by capitalizing on the expertise of both educators. It also allows for more personalized instruction to occur within the classroom. Both professional learning sessions and coaching are available.

RSN-Regional Special Education Network

The Wisconsin Regional Special Education Network (RSN) is offered in cooperation with DPI as a free support to all area directors of special education. The mission of the Wisconsin RSN is to improve the quality of educational services to students with disabilities. The RSN has identified the strategies of communication, staff development, and leadership for



accomplishing this mission. The RSN also provides technical assistance to local special education leaders via phone calls, district visits, information dissemination, and discussions at CESA 2 RSN meetings.

Special Education Consultation

The Special Education team provides consulting services to strengthen the capacity of school districts to meet the diverse needs of individual students with their special education and regular education programming. Consulting services can include but are not limited to: working with specific teachers or personnel, consulting on specific student issues, training on IEP writing and compliance, and more.

Transition Advisory Network (TAN)

The Transition Advisory Network (TAN) provides ongoing collaboration, support,

and learning opportunities to districts and staff around transition. Members have the opportunity to network with other districts and build a learning community around improving postsecondary outcomes for students with IEPs. TAN's focus includes collaboration with our ACP partners, creation of transition resources, building awareness around best practice, work around building a transition framework, and planning for a student transition event.

Transition Services

The CESA 2 Transition Services support school districts in the creation of effective transition practices within their school district through the following professional development and consultative services, which are offered both in-person and virtually through synchronous and asynchronous formats:

- Coaching: Contracted individualized sessions to assist an individual or small group of educators.
- Group Trainings/Workshops: Trainings conducted in district, at CESA 2 facilities, or virtually.
- District Transition Improvement Plan Development: Work with the CESA 2 Transition and Identification Specialist to complete a district review/assessment and develop a district transition improvement plan.

Wisconsin Accessible Education Materials (WI AEM) Center

The WI AEM Center for Accessible Education Materials was designed to assist Wisconsin's Local Education Agencies (LEAs) in meeting the federal requirements of the IDEA reauthorization of 2004 by securing access to print instructional materials in specialized formats, in a timely manner, for a student who has been determined as having a print disability. The WI AEM Center's goal is to improve educational outcomes for students with disabilities through the timely provision and use of AEM.

Those looking for these special materials can head to cesa2.org/services/wi-aem-center.cfm to begin requesting these materials for the student in need. Once the disability is determined, school districts can acquire AEM through direct purchases from publishers or non-profit Accessible Media Producers that operate in the U.S. under a copyright exemption to make books available to individuals with print disabilities.



Wisconsin Transition Improvement Grant

The Transition Improvement Grant (TIG) combines two long-standing discretionary grants: The Wisconsin Statewide Transition Initiative (WSTI) and the Wisconsin Post High School Outcomes Survey (WPHSOS) into one dynamic, statewide IDEA discretionary grant.

TIG is intended to provide effective, targeted, and low-cost professional development to Wisconsin youth, parents, educators, and all stakeholders in the area of postsecondary transition to improve strategies that will positively affect the post school outcomes of students with disabilities.

This grant is designed to strengthen and accelerate the transition process in our Wisconsin schools to improve the quality of post-secondary transition plans, increase high school graduation rates, encourage outside agency connections, and develop strong career and college readiness among our students with disabilities.

Parent - Educator Network (WSPEI)

WSPEI is all about partnerships and helping families and school districts find resources that help them build positive working relationships, leading to shared decision-making and positive outcomes for children's learning. Services are available for both families and schools and are free of charge.



Wisconsin Statewide Parent Educator Initiative



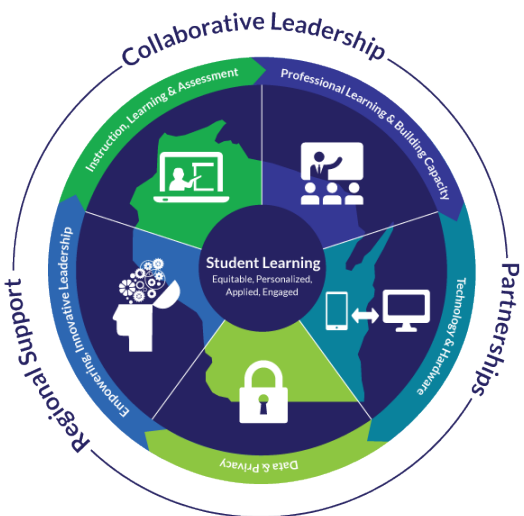
Strategic Innovation for Learning

Transforming Learning by Leveraging Innovative Tools and Strategies

The Strategic Innovation for Learning Center of Excellence offers opportunities for educators, coaches, and leaders to embrace Educational Technology and Library Services that meet the needs of today’s learners and prepares them for future success and readiness.

WI Digital Learning Framework (Technology Plan)

The Strategic Innovation for Learning Center is equipped with structures and strategies to support district leaders to implement digital learning based on the WI Digital Learning Framework. In alignment with the WI Digital Learning Framework, the Future Ready Schools Framework provides districts access to a digital dashboard, project management, stakeholder surveys, and district outcomes all focused around the learner.



Leading with Innovation and Design

The CESA 2 Strategic Innovation for Learning Team can assist schools to implement systems, designs, and audits.

AI System Implementation: Our team will lead the process of designing a district framework that encompasses any or all of the following related to artificial intelligence (AI)- policy, ethical usage/academic integrity, privacy and security, educational pedagogy, productivity, and efficiency.

Educational Technology Integration, Program Evaluation and Design: CESA 2 consultants will help lead purposeful device implementation that supports all learners. We can evaluate how devices are being leveraged, including instructional pedagogy, classroom environments and management while identifying strengths and opportunities for growth with digital implementation.

Blended Learning Implementation: Our team will support the design of a classroom that leverages the blended learning models. These models incorporate pedagogy to drive intentional use of digital devices and strategies.

Learner-Centered Practices: Our center will support the creation of educational environments where learner agency is fostered. Methods to support strategic and intentional learning that is relevant for each learner is the focus of shifting pedagogy. Micro-credentials and online learning is available.

Integration of WI Standards

The CESA 2 Strategic Innovation for Learning Team can also help your school meet

key standards. This includes using the WI Information and Technology Literacy Standards to intentionally design learning experiences that focus both on subject content and the Information and Technology Literacy Standards by using standard crosswalks. We can also help you meet WI Computer Science Standards through CS4ALL workshops that provide CS district leadership teams with the tools and resources to analyze current implementation and execute further equitable opportunities for students.

Equity and Technology

To provide equitable access, engagement, and impact in your classrooms, this center offers the following options:

- **Centering Culturally Responsive Pedagogy in Digital Learning:** Engage in a foundational overview of requisite beliefs and explore how culturally responsive beliefs and instructional moves can be leveraged through digital design
- **Tech Audit for Equity:** Explore which questions you need to ask and answer about digital tools and online curricula to help ALL students succeed
- **Using Digital Tools and Resources to Support the New Key Shifts:** Lifting Up Identity, Flexible Use of Language, and Multimodal Texts: Find out more about these key shifts, consider some examples, and learn how to leverage digital tools and resources to design liberating learning experiences for students

Library Services

Provide for your new staff in Library Media Services! Support new staff leading a library program to build knowledge and skills in such areas as collections management, digital cataloging, budgets, and ordering, as well as portfolio artifact support.

Need Library Media Specialist (LMS) services? A CESA 2 licensed LMS can purchase using Common School Funds, catalog, curate a 24/7 LMC presence or resource lists, etc. Purchase

LMS services per project or as a set number of contract days.

STEAM/MakerSpace Services

We're connecting the use of digital tools and resources to curricular content and standards such as Design Thinking, STEAM, Cybersecurity, Digital Citizenship, and MakerSpaces, Standards work, and assessment practices. Engage with our consulting and workshops to learn how to integrate these emerging standards into your classroom!



Collaborative Learning Networks

Leaders and educators collaborate with other districts to learn, share, and grow. Staff from DPI often join with state updates, pertinent information, and sharing of statewide systems.

- **Technology Leader Network:** Collaborate on topics such as cybersecurity, networking, best pricing and vendors, and more
- **Library Media Network:** Collaborate on topics such as Future Ready library planning, common school funds and purchasing, ISTE/WI standard implementation, and more
- **EdTech Specialist Network:** Collaborate on the use of educational technology as an innovative tool to enhance classroom learning, such as Makerspaces, Digital Creation Tools, and more



Systems for Inclusive Learning

Helping Every Student to Thrive and Succeed

When circumstances can change in a moment's notice, you need the preparation and knowledge to plan and respond. The Systems for Inclusive Learning Center of Excellence team can analyze data, review systems, and develop practical strategic plans that guide your decision-making and create a quality education for every student.

Practical Collaborative Learning Systems

Practical Collaborative Learning Systems (PCLS) is a framework to cultivate partnerships that leverage practices that are learner-focused, intentional, and responsive to ensure a thriving inclusive culture for all learners. This framework is designed to help districts:

- Make meaning of their current state to make systemic changes to desired state
- Create increased agency and confidence in their systems change leadership
- Deepen their understandings about an element (framework, concepts, models) and implement a more inclusive system for all students with sustainable practices and policies
- Learn and embody the mindsets to disrupt inequalities in their system
- Become adept at noticing and reflecting in a collaborative structure

Culturally Responsive Practices

Guided by DPI's Model to Inform Culturally Responsive Practices (CRP) and the work of various CRP scholars of color, CESA 2 Systems for Inclusive Learning Consultants are available to support educators in exploration of the CRP tenets of relational trust, cultural competence, equitable access to high level learning, recognizing and honoring students' identities, fostering criticality through multiple perspectives, and agency

to create change. Working to embrace these asset-based approaches in conjunction with examining and disrupting implicit bias and inequitable systems is a journey upon which CESA 2 consultants would be honored to partner with educators. Ongoing onsite coaching inspires long-term shifts in practice that positively impact school culture and practices.

Equitable Multi-Level System of Support (E-MLSS)

Equitable Multi-Level System of Support (E-MLSS) is a process for achieving higher levels of academic and behavioral success for all students. It is an overarching framework and logic for organizing and increasing the efficiency with which evidence-based practices are selected, organized, integrated, implemented, and adapted.

In Wisconsin's vision for E-MLSS, the three essential elements of high-quality instruction, balanced assessment, and collaboration systematically interact within a multi-level system of support to provide the structures to increase success for all students.

Culturally-responsive practices are central to an effective E-MLSS system and are evident within each of the three essential elements. In a Multi-level System of Support, schools employ the three essential elements of E-MLSS at varying levels of intensity based upon student responsiveness to instruction and intervention. These elements do not

work in isolation. Rather, all components of the model inform and are impacted by the others.

Universal Design for Learning

CESA 2 offers districts custom professional learning to grow Universal Design for Learning (UDL) mindsets, practices, and implementation. The UDL framework is based on brain research to build expert learners that are purposeful, strategic, and resourceful. We use the capacity building framework to to move districts to deeper levels of UDL implementation:

- **Aware:** Introduction to the UDL mindsets and framework
- **Understand:** Proactive designing with standard-based goals, predictable variabilities, and dismantling barriers for learners
- **Practice:** Implementing and coaching sessions
- **Refine:** PLC implementation, grading practices and feedback
- **Teach:** Strategic sustainability in systems and structures to support continuous UDL mindsets and practices

Leadership Team Coaching

CESA 2 staff have extensive experience and expertise for supporting district and school administrators to develop and support

effective leadership teams at the district and school levels. Leadership team coaches from CESA 2 will support your district or school through stages to create and sustain an effective leadership team by establishing structure, defining roles, developing action plans, and more.

Title I Statewide Network

The Title I Network is a collaborative effort with the CESAs that provides increased technical assistance and professional development for districts and schools with Title I programs. With financial support from DPI, each CESA provides free or reduced cost Title I services for all school districts in their CESA.

Professional Networks

Systems for Inclusive Learning offers year-long memberships designed to connect professionals from across districts to network, share resources, and deepen learning around hot topics and new trends in the field. These virtual gatherings last one to two hours and include both information sharing and collegial discourse. Check the CESA 2 professional development website to register for one of the following:

- Director of Instruction Network
- Principal and EE Network





General & State Services

Serving Schools and Fulfilling Their Needs

CESA 2 contains a variety of services to assist districts in the region and throughout the state. Through all our partnerships with other CESAs, state organizations, and outside vendors, CESA 2 covers the needs of students, families, and educators.

Business Services Consulting & Support

With decades of business office experience, CESA 2's business services consulting and support team can meet your daily business office operational and management needs. Our staff can serve as your district's business official or assist in many other ways such as processing payroll, managing accounts payable/receivable, accounting assistance, implementing new processes, and completing special projects. We can serve your district in an interim capacity during staff transitions or in permanent leadership and support roles, as well as mentoring new business managers and training business office staff to enhance and modernize your school business operations. Whether your needs are long or short-term, take advantage of CESA 2's experienced staff, and let's work together to design a custom solution that best meets your district's needs.

Dialogue with Attorney Program

The Dialogue with Attorney program is intended to address general procedural compliance questions regarding special education law. Typical questions and topics include IEP content requirements, IEP meeting requirements, student discipline procedures, least restrictive environments, evaluation procedures, student transfers, Section 504 accommodation plans, etc.

The program does not include development or review of policies, letters, or extensive review of school district documents.

The attorneys in the program will advise participants when the request may be outside the program.

CESA 2 has made arrangements with key Wisconsin law firms with school law practices in special education to provide support to special education directors.

Driver Education

Driver Education (DE) is a foundational offering of CESA 2. Districts that contract with CESA 2 are able to offer a DE program to students at no cost to the district. This program allows districts to offer DE to their high school students without incurring operational, vehicle, staff, and liability costs. Our program uses the American Automobile Association's (AAA) How to Drive (15th ed.) textbook, which meets all requirements of Wisconsin DPI, WI DOT for Driver Education, and was adopted by ADTSEA in 2020 as the national organization's curriculum. The program is 100% funded by student fees. There are two main ways to offer instruction:

Traditional Classroom

Driver Education is taught in the local high schools of CESA 2 partner districts. CESA 2 instructors are certified educators through WI-DPI, an important distinction when compared to commercial driving schools. Behind-the-wheel (BTW) driving is conducted locally with CESA 2 instructors providing instruction.

Online Course

CESA 2 offers an online, asynchronous option for completing the classroom phase of driver education. The online course, along with a high school program, offers students a chance to attend the course based on their schedule. It fulfills the online learning standards set by iNACOL, an international association that specializes in competency-based online learning. Compared to most other courses that use software grading only, our DE teachers manually grade assignments and involve themselves in the students' learning and growth. Behind-the-wheel (BTW) driving instruction for online students is offered in districts where we offer traditional classroom.

Additionally, if your district only has needs for learners to have an online DE course option, we work with districts throughout the state to provide our online course to their students. The course is fully recognized by DPI and the DMV, so learners may take the BTW portion with a local driving school if we do not offer BTW lessons in your district.

FLEX

Want professional development on your timetable? Through Flexible Professional Development (FLEX) by CESA 2, you have access to a variety of on-demand short videos, modules, courses, and micro-credentials. All our CESA 2 FLEX Offerings are developed and presented by our expert consultants. Schools and districts can register groups at discounted rates for these offerings. Check out everything FLEX offers at flex.cesa2.org.

Human Resources Network

Network with other HR professionals and discuss current topics. For anyone with HR duties, these networking events will answer questions and provide support for whatever needs you have.

IT Support and Consulting Services

Does your district need IT support? CESA 2 offers a variety of services to solve your technological needs and problems. With over 30 years of experience working in the IT sector, our consultant will determine solutions that work for your school and district, big or small. You can schedule a consultation today and achieve your goals of security and seamless learning.

Some services include:

- Managed Service Implementation
- Server Room & Cabling Management
- Endpoint Detection & Response (EDR)
- Email Migrations
- Backup & Security Services
- And More!



JEDI Virtual School

Expand your course offerings with JEDI Virtual School. Originally formed in 1995, the (JEDI) Jefferson Eastern Dane Interactive network has grown to be a consortium of 15 school districts in Wisconsin. Over the years, JEDI Virtual School has developed into a virtual school that continually evolves to meet consortium district needs. JEDI provides a comprehensive, standards-based, asynchronous virtual curriculum for both full and part-time students. JEDI helps districts retain students by expanding the learning options available within their district.



Jefferson and Western Kenosha County Head Start

Head Start programs prepare America's most vulnerable young children to succeed in school and in life beyond school. We achieve this by working with community partners to deliver services to our at-risk families to remove their barriers to success and to cultivate children's social, physical, emotional, and cognitive development so they have the abilities necessary to succeed in school and life.

The Jefferson and Western Kenosha County Head Start program provides comprehensive preschool services to 195 children ages 3-5 living in Jefferson County and Western Kenosha County. The mission of the Head Start program is to nurture and promote the individual growth and development of each child, with respect to the diversity of each child's family.

The CESA 2 Head Start staff is committed to providing services and partnering with families

to support both school and home in the core areas of early learning, health, and family well-being, while engaging parents as partners every step of the way.

Professional Resource Center

The Professional Resource Center (PRC) is an instructional materials library for both special and regular education classrooms to use to support students. School districts can get the most out of their ever-tightening budget by being a member of the PRC.

Available items include books, a 3D printer, learning assessments, classroom kits, zSpace, a Virtual Reality Kit, and so much more. This service includes a virtual district visit and consultation and CESA 2 van delivery service. The Assistive Technology (AT) section provides districts with access to technology, tools, and software. Districts can save time and money by borrowing devices,

switches, and software from the AT Library. Resources are delivered and returns picked up once a week at the drop-off/pick-up site (determined by the district administrator).

The ATLC is a DPI-funded statewide lending library that is housed within the CESA 2 PRC. We provide district staff the ability to trial high end devices (over \$4,000) on behalf of a student. After a trial period, the district can then purchase whichever device that is best-suited for the student. This is a free program to all schools in Wisconsin. An IEP is required for the student trial. Contact us at wisconsinAT4all.com or donna.hutson@cesa2.org to set up an account.

Spelling Bees

Every year, CESA 2 holds regional spelling bees, in conjunction with the Wisconsin State Journal and other CESAs, to determine the Wisconsin representatives for the Scripps national spelling competition. Schools in the CESA 2 area with any grade level between grades 3-8 are eligible to participate in a regional bee. Schools only need to hold a local or district spelling bee to determine their participant(s) to send to the CESA 2 regional bee. Registration begins each year in October or November, with the regional bees taking place in January or February. Check the CESA 2 website for more information and how to register.

Video Production

Want to have high-quality videos showcasing your school or district but don't have the equipment or capacity? The CESA 2 Communications Team can cover all aspects of planning, filming, and editing to create engaging videos for your website, social media, and more. These videos will promote the message you want to share, whether it's the great work in your school, helping your referendum campaign, communicating messages to your parents and staff, or anything else to reach your objectives and goals. Check out our portfolio at cesa2.org.

Vocational Opportunities and Assistance

CESA 2 VOA is a community-based transitional employment and placement program designed for individuals with a disability. VOA has been successfully operating since 1982, providing a wide range of employment assistance to those individuals with multiple barriers to employment. Our agency has placed over a thousand individuals in successful careers over the past 20 years by creating strong community and employer partnerships.

The mission of CESA 2 VOA is to promote the independence, self-sufficiency, and productivity of individuals with disabilities. VOA facilitates informed decision-making, goal-setting, personal empowerment, and community integration, while protecting and promoting the dignity and rights of the individuals served.



Wisconsin Safe and Healthy Schools Center (WISH Center)

The Wisconsin Safe and Healthy Schools (WISH Center) Training and Technical Assistance Center grows the capacity of educators to positively impact the well-being and equitable outcomes of every student. The vision of the WISH center is: “Every Child Safe, Healthy and Connected.” Visit wisheschools.org for more information.

Offerings include:

- Training and technical assistance for public schools in Wisconsin around: Restorative Practices, Mental Health, Youth Mental Health First Aid, ATODA, Compassion Resilience, School Safety,

Bullying Prevention, Suicide Prevention, SEL, SBIRT (Screening, Brief Intervention and Referral to Treatment), Vaping Prevention

- Professional learning opportunities provided online, through blended education or in-person
- Follow-up technical assistance to participants in professional learning events in order to support implementation
- Web page and e-newsletter with access to the most recent data, information, practices and programs

The Wisconsin Safe & Healthy Schools Center is a collaborative project between DPI and the CESA Statewide Network (CSN).



CESA purchasing

Use Our Procurement Support Services and Pre-Negotiated Contracts to Save Time and Money!

Purchase everything you need for your school, including athletic equipment, digital software, facilities supplies, and so much more! CESA Purchasing works with over a hundred vendors to meet your needs. Many of our contracts have undergone a full RFP process to be awarded, potentially allowing you to avoid this painstaking and time consuming task on your end. Using our contracts and procurement support services is FREE for all Wisconsin schools and educational entities, no membership or formal sign up required.

CESA Purchasing has been expanding its services to further meet your needs. In addition to our blog, which covers a wide range of purchasing topics, we've developed services to help you avoid hurdles and challenges throughout the purchasing process, as well as implementing improvements to make using our contracts easier than ever.

Our Services include:



Source a Quote - Let us source quotes for your purchasing needs. Just fill out the brief form on our website and we'll do the rest!



Procurement Assistance - Need help with planning, analysis, and management of a particular project? We can help you through the process!



Access Our Vendor Network - Might you need recommendations from experts in the field before making a purchase? Use our extensive network of vendor partners!



Vendor Audit - Are you getting the discounts you should be receiving? Let us double-check your agreements with vendor partners to ensure you're saving time and money!

Sourcing Quotes Just Got Easier!

Understanding the challenges and time constraints you face in school procurement, we have developed this service to streamline your purchasing process. Sourcing quotes through CESA Purchasing connects you directly with hundreds of reliable vendors, ensuring you receive competitive quotes that meet your specific needs.

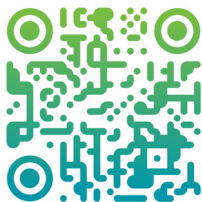


Why source quotes through CESA Purchasing?



- **Time-Saving:** Let us do the heavy lifting of sourcing quotes.
- **Cost-Effective:** Access to a wide range of vendors ensures competitive pricing.
- **Tailored for Schools:** Products and services specifically suited for educational environments.

Save Time & Money



We'd like to invite you to take advantage of this service and experience the difference it can make in your procurement activities. Submitting a request is easy – simply visit cesapurchasing.org/source and complete the form. We'll be in touch with any additional questions to ensure we are interpreting your needs and communicating them to potential vendor matches effectively. Depending on the product/service type, the

quoting process timeline varies. Please allow 1-2 weeks for our team to collect quotes, which will be provided to you for your consideration.

Your time is precious, and we are here to support you in making informed, efficient purchasing decisions. For any questions or additional information, don't hesitate to get in touch with Meghan Cropp at meghan.cropp@cesapurchasing.org.

CESA Purchasing is not a third-party purchaser or distributor. We assist with securing quotes for Wisconsin educational entity purchasers. Once quotes are provided to the purchaser, it is their responsibility to complete the purchasing process with the preferred vendor.



Innovative Thinking. Tailored Delivery.

1221 Innovation Drive, Suite 205
Whitewater, WI 53190
262.473.1473
www.cesa2.org

